

# The Future Cambridge Civic Quarter

Celebrating 800 years of municipal use





# Agenda

Summary of procurement process

Introduction to the Consortium

Consortium experience

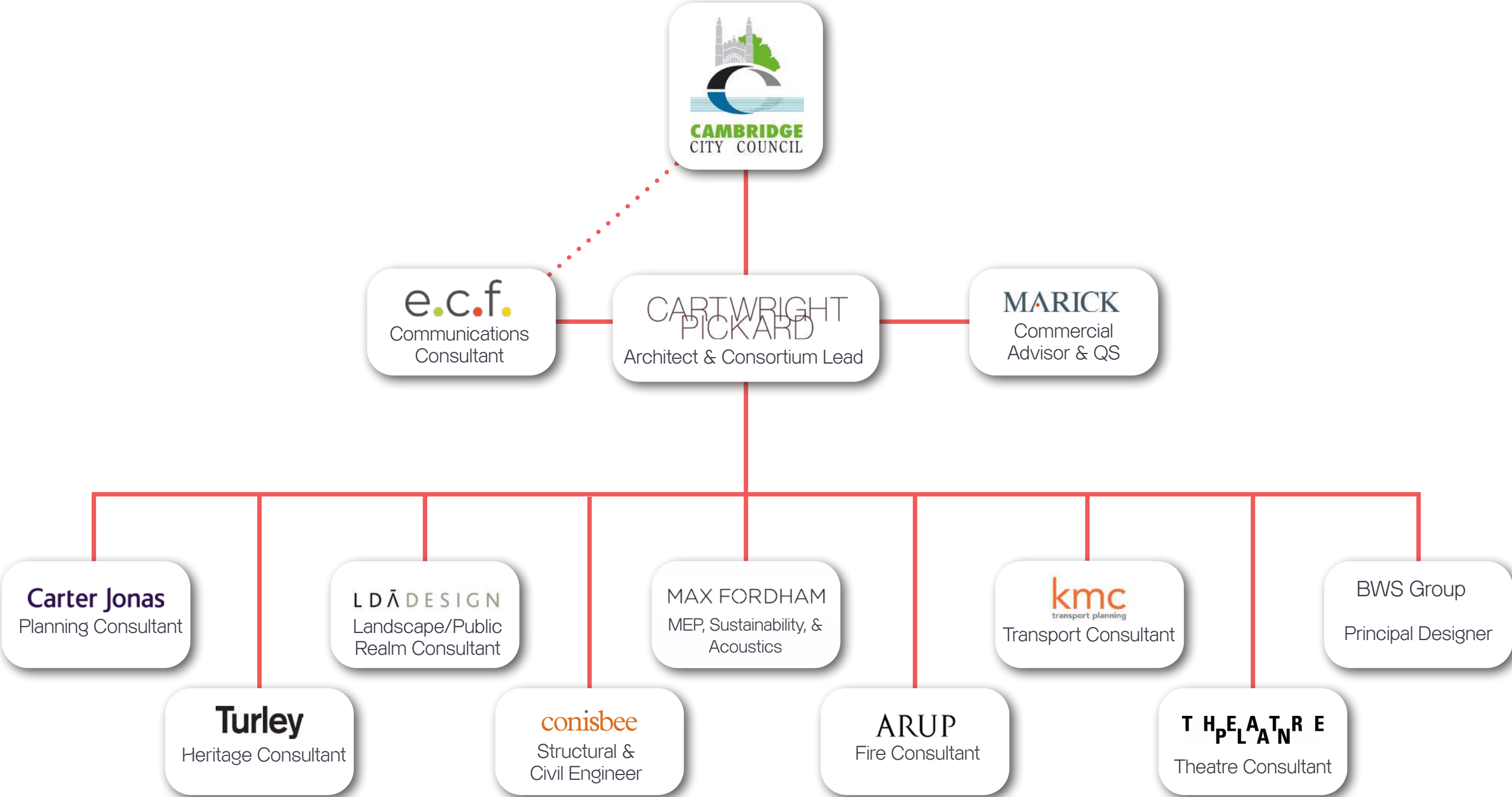
Engagement programme

Discussion

# Summary of procurement process

1. Comprehensive procurement process to appoint a development consortium
2. Architect and Design team, complemented by Commercial Advisor
3. Questions designed to test approach – to design, to commercial viability, to consultation
4. 15 Submissions received, interviews with 3 shortlisted parties
5. 60% Quality 30% Price 10% Interview
6. Cartwright Pickard consortium appointed

# Introducing the Consortium





# Understanding the Cambridge Context



**e.c.f.**  
Communications  
Consultant



**Hartree, Cambridge**  
Delivering the engagement programme for Hartree's Core Site, which will provide a mixed-use scheme including 5,600 homes.



**Greater Cambridge Partnership**



**Making Connections 2022**  
Consultation report, May 2023

**Making Connections, Cambridge**  
A package of proposals for transforming public transport, cycling and walking to reduce congestion and pollution across Cambridge.



**Cherry Hinton North, Cambridge**  
Managing the engagement process to support proposals for up to 1,200 new homes on a 45-hectare site next to Cambridge Airport.



**Carter Jonas**  
Planning Consultant



**The Meadows, Cambridge**  
Enhancing protected open space through careful engagement and negotiation to provide a community centre and affordable housing.



**Hartree, Cambridge**  
A masterplan for the Cambridge Waste Water Treatment Works to create a mixed-use neighbourhood of 5,600 homes and workspaces.



**Hobson House, Cambridge**  
Leading a successful application for the conversion of a Grade II listed office building into a 57-bed hotel and charity-run cafe for CCC.



**MAX FORDHAM**  
MEP, Sustainability, &  
Acoustics



**Entopia, Cambridge**  
A deep retrofitted sustainable office for Cambridge Institute for Sustainability Leadership, now the UK's largest EnerPHit certified office.




**Trinity College, University of Cambridge**  
Sensitive upgrades the performance and energy consumption of the Grade I Listed building.




**Turley**  
Heritage Consultant



**Old Press/Mill Lane South, Cambridge**  
First part of major central Cambridge regeneration involving numerous heritage assets.



**MARICK**  
Commercial  
Advisor & QS



**Park Street, Cambridge**  
Transforming a decaying car park into an upscale five storey, 229 unit Staycity aparthotel with 3 levels of public underground parking.



**50/60 Station Road, Cambridge**  
New commercial office development providing around 155,000 sqft of net internal area on behalf of Aviva.



**30 Station Road, Cambridge**  
New commercial office development providing 80,000 sqft of net internal area on behalf of Aviva.



**LD&A DESIGN**  
Landscape/Public  
Realm Consultant



**Devonshire Gardens, Cambridge**  
A mixed-use development that will create a publicly accessible green oasis in the heart of the residential district of the city.



**Cranmer Road, University of Cambridge**  
The landscape design of an award-winning campus for the Universities' postgraduate community.



**conisbee**  
Structural &  
Civil Engineer



**Kings College Chapel, University of Cambridge (UoC)**  
Appraisal of the original 16th century drainage system and adaptations to meet sustainability requirements.



**kmc**  
transport planning  
Transport Consultant



**Wellcome Trust Genome Campus, South Cambridgeshire**  
Transport planning for a campus expansion providing 1m sqft of life sciences floorspace and homes.



**Trumpington Sporting Village, South Cambridgeshire**  
Development of a sustainable transport strategy and its effects on the Sporting Village's proposals.



**Cambridge Market Sq, Cambridge**  
Transport planning, servicing, and access consultancy to LDA-Design as part of the Cambridge Market Square Project in 2021.

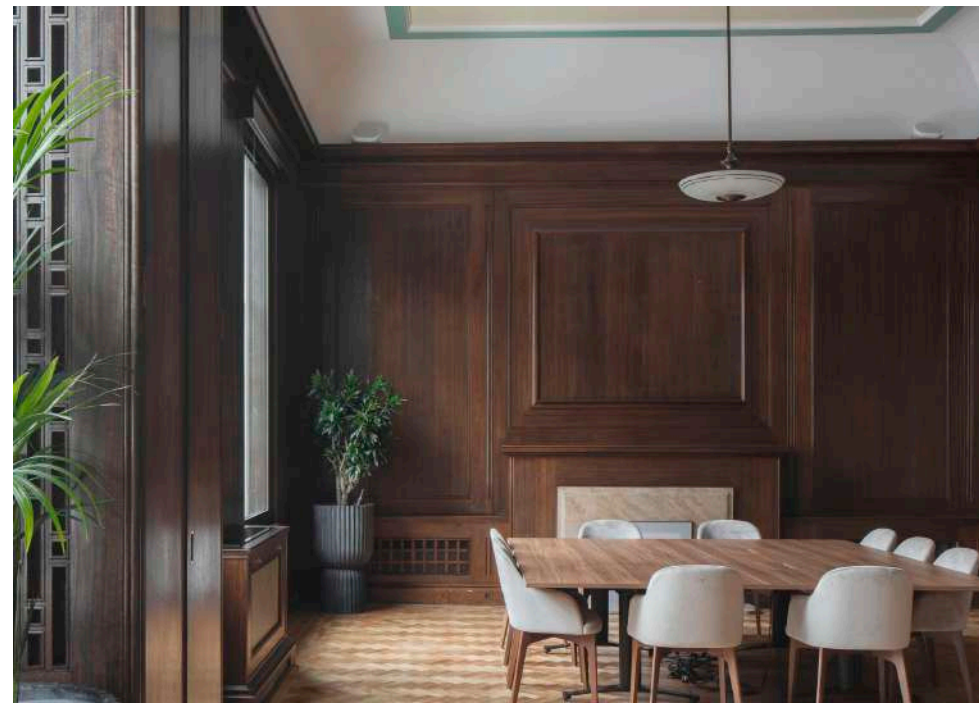
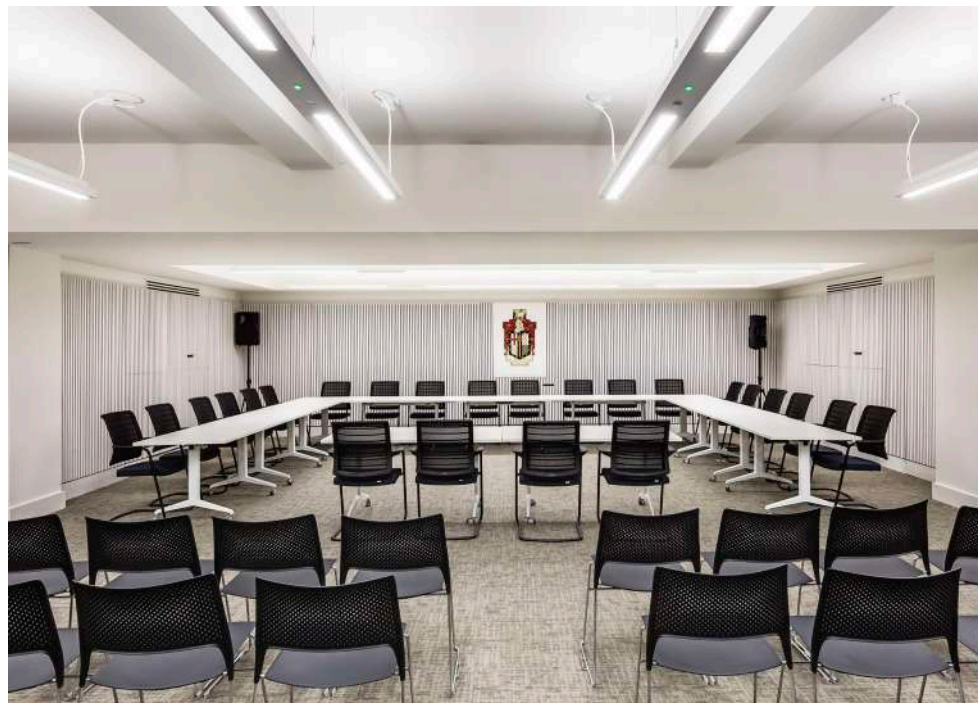


# Civic Office & Town Hall Experience





# Civic Office & Town Hall Experience





# Public Realm and Market Experience LDA

Our purpose is to make great places and shape the world around us for the better

We are over 200 strong, with eight studios: London, Bristol, **Cambridge**, Exeter, Glasgow, Manchester, Oxford and Peterborough.





# Public Realm and Market Experience LDA



The Beehive, Cambridge

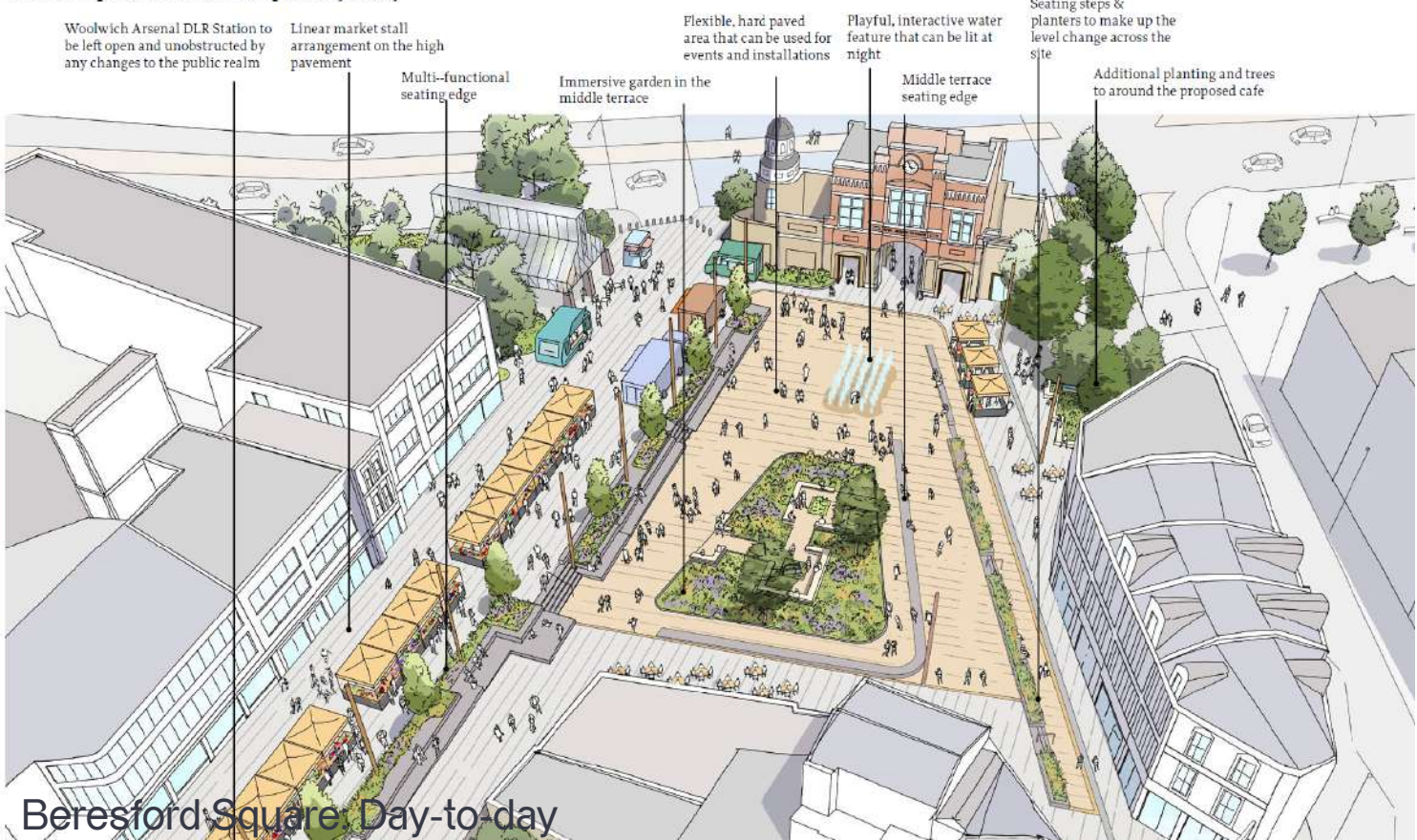


Eddington Phase 1 Delivery, Cambridge



Devonshire Gardens, Cambridge

Artist's Impression: Beresford Square day-to-day



Beresford Square Day-to-day

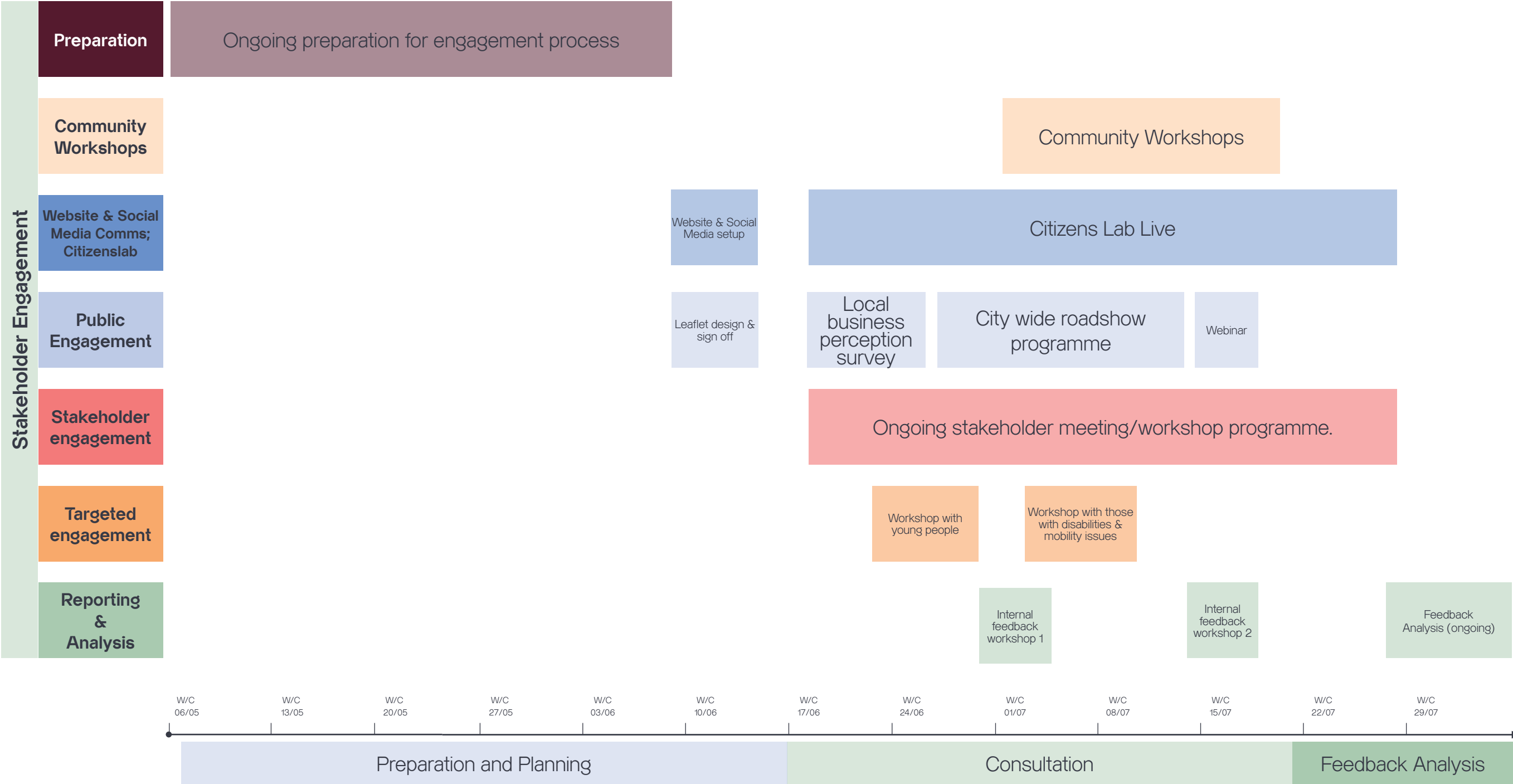


Market Square, Cambridge



# Engagement Process

We believe every person, no matter their background, has the ability and the right to help create positive change, and influence the decisions that impact their lives. That means engaging beyond the usual suspects and providing the opportunity for harder to reach groups to get involved and shape the future of their Civic Quarter.





# The Future Cambridge Civic Quarter

Celebrating 800 years of municipal use

