

SPRING 2025

Cambridge Matters

Cambridge City Council's magazine for residents



**Get out and
get active**
Low-cost exercise
sessions this spring

**Tackling
climate
change**

Our journey
towards net
zero carbon

Don't forget the local elections on Thursday 1 May

CAMBRIDGE

We're Coming To You

PROJECTS 4 RENEWABLES **Panasonic**
heating & cooling solutions

Did you know you can make energy efficiency upgrades to your home for FREE?

*Subject to eligibility of Government Grants

What measures are covered?

- Solar PV
- Air Source Heat Pump
- Loft Insulation
- Cavity Wall Insulation
- Flat Roof Insulation
- Electric Storage Heaters
- Mechanical Vents
- Smart Heating Controls
- FREE EPC Assessment
- First Time Central Heating/Boiler Upgrade

What's in it for you?

- Reduced Energy Bills
- Protect Yourself from Rising Fuel Prices
- Generate Your Own Electricity
- Increased Comfort in Your Home
- Add Value to Your Home
- Contribute to a Cleaner, Greener Future

*Project4Renewables provides all services with our in-house specialist teams.

Want to find out what Government Grants you qualify for and start saving? Call NOW on 01223 258049 OR visit...

www.projects4renewables.co.uk/community



CONTENTS

- 4** Over 650 new council homes built
- 5** Celebrating 150 years of Cambridge Corn Exchange
- 7** Local elections on 1 May
- 9** Supporting activities and facilities across the city
- 11** Supporting biodiversity
- 12** How the council funds services and where the money comes from
- 14** Get out and active
- 16** 50 things to do in Cambridgeshire
- 17** A journey to better recycling
- 18** New modular homes for rough sleepers
- 22** Tackling climate change: our journey so far

Changes to Easter bin collections

Bin collections due on Good Friday, 18 April, will be four days earlier than usual, bringing those collections forward to Monday 14 April. This is the only bin collection date change over the Easter period. All other collections will take place on your usual bin collection day.



Find out your bin collection dates and what goes in which bin at:
cambridge.gov.uk/bins

We want your views on smoke control areas

Cambridge residents have been invited to have their say on proposals to replace the current smoke control areas (SCAs) with a single smoke control area which will cover the whole city. The proposals are designed to help reduce air pollution from smoke and improve health.

There are currently three SCAs in Cambridge that cover the west and the centre of the city. These SCAs were established in the 1960s by Cambridge City Council to reduce pollution from burning wood and coal.

SCA rules in these areas do not currently apply to permanent residential moored vessels, but their inclusion is being considered.

SCAs help to reduce pollution from burning wood and coal – within an SCA you can only burn wood using appliances approved by the Department for Environment, Food and Rural Affairs



The closing date for comments is Sunday 20 April 2025

(DEFRA), or you can use smokeless fuels in other stoves and open fires.

Smoke from chimneys contains tiny particles known as particulate matter.

Solid fuel and wood burning is the largest single source of particulate matter emissions in Cambridge. Particulate matter can travel deep into the lungs and cause or worsen numerous health conditions.

Front cover: River Cam at Jubilee Gardens

Cambridge City Council does not necessarily endorse the products or services featured in advertisements in this magazine.

Request an audio version of Cambridge Matters on CD for visually impaired people using the contact details below.

For any editorial enquiries:
 ✉ communications@cambridge.gov.uk
 ☎ 01223 457290



Design, production and sales

KM Media & Marketing,
 County House,
 9 Checkpoint Court,
 Sadler Road, Lincoln LN6 3PW
 ✉ km-media.co.uk
 ☎ 01522 692542
 ✉ info@km-media.co.uk



How to contact Cambridge City Council

It's often easier to contact us online, at a time that suits you. You can complete a short form to report things like flytipping – cambridge.gov.uk/report-flytipping, a missed bin collection – cambridge.gov.uk/report-a-missed-household-bin-collection, or a change in your circumstances affecting your benefits or Council Tax – cambridge.gov.uk/online-accounts.

✉ cambridge.gov.uk
 ☎ 01223 457000, Monday to Friday, 9am to 5.15pm
 ☎ 0300 3038 389, for emergencies outside of office hours
 † Appointments are available for customers who have queries which cannot be resolved by telephone or online. Call us for help.

Appointments are available 9am to 5.15pm, Wednesday to Friday, at our Customer Service Centre at Mandela House, 4 Regent Street, Cambridge, CB2 1BY.

Please note that we no longer operate customer services from the Guildhall.

Over 650 new council homes built, with over 1,000 more on the way

As the second least affordable city in which to buy a home, and the third least affordable city to rent, Cambridge has a housing affordability crisis.

We are doing everything we can to address this – working to improve accommodation standards for people living in existing council homes; and building additional council homes to meet local need and address wider housing supply issues, such as the need for more large family homes.

Through our innovative Cambridge Investment Partnership (CIP) with housebuilder Hill, we have been delivering an ambitious house-building programme since 2018.

For each of the last two years, we built more council homes on average than almost all other councils in the country. This equates to over 650 council homes having been built since 2018, as well as around 350 'market' homes.

Not only do the market homes help to address the affordability crisis which is linked to housing availability, but our profits from selling these private homes are

reinvested into our future council house-building projects – as well as funding vital facilities such as parks, preschools, and community centres on new development sites.

The new developments that we are building prioritise balanced communities that are 'tenure blind', meaning there is no visible distinction between council and private homes.

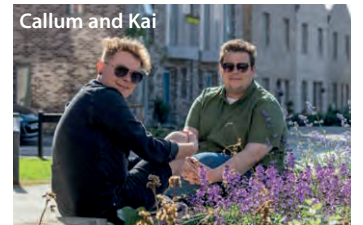
All of the new homes we're building also adhere to high standards of space, light, accessibility, sustainability, and energy efficiency, helping tenants reduce their energy bills. We build wheelchair accessible housing, with 5% designed specifically for wheelchair users.

Elaine, a tenant in one of our newly built council homes at Ironworks, said: "I am happier as I feel more secure. It is also a lot cheaper to heat and the flat keeps really warm."

Callum, another new tenant at Ironworks, said: "We love our brand-new kitchen which is really contemporary, and it feels so cosy and warm... We feel really fortunate to be living here and so settled already."



We are pleased with the progress made so far, but we're only just getting started. While land scarcity and rising construction costs remain challenges to what we can afford to deliver, we have pledged to build a further 1,000 council homes and 1,000 market homes by 2030 as we pursue our vision for a Cambridge where everyone has a warm, safe, and affordable home, and beautiful open spaces to enjoy.



For more information about Cambridge Investment Partnership's housebuilding programme visit: ip-cambridge.co.uk

Spotlight on: Fanshawe Road

As part of our house-building programme, we recently started construction of 84 new homes at Fanshawe Road in Coleridge – on a site that previously had 30 ageing 1950s homes which were no longer cost-effective for the council to maintain or renovate.

Of the 84 new homes, 45 will be 'affordable rent' council homes, and 39 will be market sale homes.

Of the 45 affordable rent homes, 34 will be available at 60% of the market rate, while the remaining 11 will be at 80% of the market rate.

Affordable rents are not as low as other 'council rents'. Council rents are

available to people on the housing register at around 35% to 40% of market rent, and are a term people may be more familiar with.

Affordable rents are a newer form of rent across the country, intended to help those who struggle to rent or buy but who don't qualify for council housing. They provide more opportunities for people to access secure, high-quality, sustainable new homes at more affordable rates.

As part of this development, the protected open space on the site will be reconfigured, enhanced and slightly increased. A new play area and family-friendly amenities will also be added, and



existing mature trees on the site will be preserved, with 27 new trees being planted alongside wildflowers, bat boxes and bird boxes.

Celebrating 150 years of Cambridge Corn Exchange

This year, the Cambridge Corn Exchange is celebrating its 150th anniversary!

The National Lottery Heritage Fund has awarded a £139,598 grant to Cambridge Corn Exchange to uncover, share, and celebrate the heritage of the region's historic venue.

Designed by Victorian architect, Richard Reynolds Rowe, the Cambridge Corn Exchange was built on the site of a medieval priory, using a quarter of a million local bricks and began life as a place for farmers to trade corn.

In the ensuing 150 years the venue has been at the heart of city life: from late nineteenth century motor shows; revolutionary suffragette meetings; Tea for a Thousand in 1935; the cleaning and repair of rifles in the 1940s, on to more recent decades when some of the biggest names in entertainment have performed on its stage.

Telling the story of the venue's varied history, its unique place in the life of Cambridge and those who've passed through its doors, as well as introducing the Corn Exchange into the lives of younger generations, will now be made

possible thanks to support from the Heritage Fund.

Cambridge BID is also supporting the venue's 150th anniversary year.

A series of events will take place for the 150th anniversary project, designed to welcome as many as possible through the doors of the venue to be part of the Corn Exchange story. Activities include a major specially curated six-week exhibition taking place in the Corn Exchange, an access all areas Community Open Day, an incredible 60 workshops with city schools involving partners like Dance East and Cambridge Literary Festival, a special 150th anniversary Celebration Day in November 2025 and a special story-gathering project, to record for future generations all the memories and experiences reflecting people's relationship with Cambridge Corn Exchange. Without this grant from the Heritage Fund these stories might remain unheard and unrecorded.

Welcoming the news, the council is thrilled to have the opportunity to take a moment to discover and celebrate the rich heritage of this iconic Cambridge building.



A Cambridge Corn Exchange production in the late 19th/early 20th century

Cambridge Corn Exchange has played a major part in shaping the city's iconic past and the council is excited to uncover more of this rich history with and for Cambridge communities.

Information can be found at:
cornex.co.uk

Music, comedy and more – it's the new season at the Corn Exchange

The days are drawing out, buds are appearing and spring is in the air! And what better way to appreciate the change in season, than to head out into Cambridge's vibrant city centre and enjoy some of the incredible entertainment booked in at the Corn Exchange over the coming months.

An amazing array of stars will be in Cambridge from the worlds of comedy, rock, pop, dance, the spoken word and children's shows. As ever, comedy fans have some of the biggest names in stand-up to look forward to including **Harry Hill, Ellie Taylor, Dara O'Briain, Katherine Ryan, Henning Wehn, Rob Beckett**, plus humour from a more unexpected source as *Menopause the Musical 2* sails into

Cambridge - a hilarious and heartfelt sequel filled with humour, friendship, and parodied hits, as four women navigate the ups and downs of life and menopause on a fun-filled cruise!

The months ahead see a packed rock and pop calendar filled with favourites from the present and the past: **Frank Turner and The Sleeping Souls, Deacon Blue, The Waterboys, Skunk Anansie, Ocean Colour Scene, Kid Creole and The Coconuts, Erasure's Andy Bell**, ... and among top tribute acts are **The**



Simon and Garfunkel Story, Creedence Clearwater Review and Taylormania!

A wonderful selection of children's shows will help keep little ones entertained and enthralled – whether it's the unforgettable experience of the Natural History Museum's touring **Dinosaurs Live** show, Cbeebies' **Bing's Birthday** or musical fun with **Andy and The Odd Socks** or **The Dinosaur That Pooped**.

The popularity of music composed for film continues with a show dedicated to Hans Zimmer, creator of some of the most iconic music in cinema. A specially illuminated live chamber orchestra performs pieces from films including, *E.T.*, *Jurassic Park*, *Jaws*, *Schindler's list*, *Gladiator*, *Harry Potter*, *Star Wars* and more.



Andy and the Odd Socks

This spring also sees two quite different shows based around the spoken word and poetry legend **Michael Rosen** presents a powerful one-person show, exploring grief and mortality *Getting Through It*, formed of a double-bill of monologues: *The Death of Eddie* and *Many Kinds of Love*. And in May, **Brian Bilston and Henry Normal** appear together for the first time in a show drawing on their vast catalogue of crowd favourites – and throwing in new poems.

To book and find out what else is coming up go to cornex.co.uk



Reeds Ely

Your home is
at the heart
of everything
we do.

For more than 15 years, we've been helping you create spaces that feel uniquely yours. Whether it's the sofa you've curled up on for movie nights or the dining table that's hosted family feasts, your home is at the heart of everything we do. Come and visit our home of quality, value, style and comfort and discover what's next for your home.



REEDS Furniture, Flooring & Bed Centre, Ely CB6 3NX T: 01353 669754
Open Mon – Sat 9am to 5pm & Sunday 10am to 4pm

REEDS Furniture, Flooring, Bed Centre & Homestore, Downham Market PE38 9DS T: 01366 382213
Open Mon – Sat 9am to 5pm
or online at reedshomestore.co.uk

Cast your vote in the local elections on 1 May

Elections take place in Cambridge on Thursday 1 May for 12 councillors to represent the Cambridge divisions of Cambridgeshire County Council, and to elect a Mayor for the Cambridgeshire and Peterborough Combined Authority.

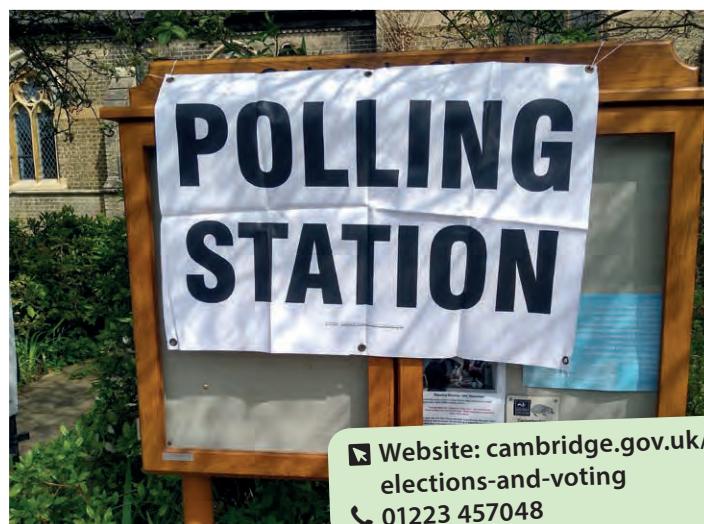
If you wish to vote in these local elections and have not already registered, you need to register to vote by 11.59pm on Friday 11 April. You can register to vote online at gov.uk/register-to-vote. It only takes a few minutes but you will need to have your National Insurance number with you to register. If you don't have access to the internet, you can

request a paper form by calling 01223 457048.

If you are already registered to vote you will be sent a poll card before the elections with details of ways to vote and where your polling station is located.

If you're going to be away from Cambridge on 1 May, or just prefer to vote by post, the deadline to apply for a postal vote is 5pm on Monday 14 April, and the deadline for appointing a proxy (someone to vote in person on your behalf) is 5pm on Wednesday 23 April.

If you're planning to vote in person at a polling station on election day, don't forget that you will need to bring an



acceptable form of photo ID with you, such as driving licence, passport or blue badge. If you don't have photo ID, you can apply for a free

voter authority certificate. More information about this can be found on the Electoral Commission's website electoralcommission.org.uk

Helping you on your back to work journey

A free programme has launched in Cambridge, South Cambridgeshire, East Cambridgeshire and Royston to help people who may be struggling to find work or remain in employment due to a health problem.

The WorkWell pilot programme matches local people with a work and health coach who can establish what they need help with, overcome barriers and help them find the right local support. A team of work and health coaches at the leading local mental health charity Cambridgeshire, Peterborough and South Lincolnshire (CPSL) Mind will provide personalised support, and will connect people with different services, such as health professionals, community sector services and local support groups.

Anyone with a health problem which means they cannot work or are struggling to stay in work can access the service, as long as they are over 16; live in, or are registered with a GP or Job Centre in Cambridgeshire or Royston; and are eligible to work in the UK. Taking part in the programme is completely voluntary and has no impact on benefits.



For more information, contact: workwell@cpslmind.org.uk
To make a referral, visit: www.growthworkswithskills.com

The Cabin – a new space for young people

Back in 2020, local charities Abbey People and the Cambridge United Foundation identified the need for a dedicated young people's space at the Abbey Leisure Complex to provide a focus for young people and local groups working with them. Funding from NHS England and S106 developer contributions has since been secured to turn this vision into reality.



The Cabin, which will be located near the main building at Abbey Leisure, has been designed with input from young people in Abbey, and will be a place to support wellbeing through activities potentially ranging from arts activities to yoga sessions, counselling to nature clubs. Local organisations met up with young people and other groups who hope to use the space in future, to find out how they would want to use it, to generate design ideas and talk about how they can be involved in the future.

The build specification has now been agreed and The Cabin will be built off site and brought to the Abbey Leisure Complex later this year. Young people and others who have been involved in the project will provide feedback and have the chance to join in as the interior is fitted out and the programme for use is developed.

This is just one of the exciting community-led projects and major developments which have started to take shape in Abbey ward in recent months. In total more than £100 million is proposed to be invested in Abbey in the coming years, in order to create much-needed new homes and community facilities alongside wider development for the area.

For more information:
cambridge.gov.uk/shaping-abbey
shapingabbey@cambridge.gov.uk



mini

Museum of Cambridge

Looking for some Family Fun? Visit the Museum of Cambridge!

There's always things to do for families at the Museum of Cambridge!

Regular drop-in craft events and four permanent trails for children of all ages.

Little Feet, Big Impressions storytelling and sensory sessions for under 5s.

Free themed workshops based around the Museum's collection.

Standard entry applies, children 16 and under visit free.
museumofcambridge.org.uk



2-3 Castle Street, CB3 0AQ
Registered Charity No. 311309

East Anglian Traction Engine Society - Registered Charity No. 296027

SAFFRON WALDEN CRANK - UP

STEAM AND VINTAGE VEHICLE SHOW



Carver Barracks, Wimbish, Saffron Walden CB10 2YA
ADULTS £8.00 each, CHILDREN FREE - GATES OPEN 10.00

TICKETS AVAILABLE TO PRE-BOOK NOW

www.swcrankup.co.uk 07984 245616

26th & 27th APRIL 2025

Johnsons
GARDEN BUILDINGS

Beautiful garden rooms,
home offices, summerhouses
and much more



For all our latest offers
use your smartphone camera to scan here
or visit johnsonslisure.uk/cambridgematters



Your nearest branch is at **Dobbies Garden Centre**
Dunsbridge Turnpike, Royston SG8 6RB | 01763 295300

How our grants and S106 funding support vital activities and facilities across the city



Over £1.1m

has been awarded to Cambridge-based community groups to help reduce social or economic inequality for residents in 2025-2026. This includes boosting employment opportunities, providing financial advice, offering arts and cultural opportunities and improving health and wellbeing. This enables such activities as online employment training, over 50s exercise classes, cookery sessions, holiday meals, community farming, counselling for young people, family support groups and swimming sessions for disabled youngsters.

Other grants are also available. For example, we award Sustainable City Grants to help local voluntary and community organisations to deliver activities or events in Cambridge that will contribute to delivering our Climate Change Strategy objectives. We also provide grants to help low-income households install energy efficiency improvements and low-carbon heating through our Action on Energy partnership with local councils. Our economic development support, funded via the UK Shared Prosperity Fund, includes grants for sustainability, social enterprises, market traders and local independent companies.

Meanwhile, S106 funding (financial contributions from developers to offset the impact of new housing and other development) helps to improve local facilities and amenities, such as play areas, open spaces and community and sports facilities. Every ward in Cambridge has benefitted from S106-funded projects. In

Each year, we provide grants to many organisations doing amazing work in Cambridge. These help our community groups deliver important services and activities for residents, including those most in need. Here are some examples of the projects being supported.



£321.8k

of Homelessness Prevention Grants in 2025-26 will go to

voluntary and community groups tackling all forms of homelessness in Cambridge. These include Cambridge Citizens Advice, Cambridge Cyrenians, Cambridge Women's Aid, Centre 33, It Takes A City, Jimmy's Cambridge and Wintercomfort. In addition, £120,000 has been set aside for winter accommodation provision for rough sleepers as part of a three-year contract and for an employment advice service for people who are homeless or vulnerably housed. These grants form part of much wider work by the council and partners to help people find and sustain accommodation, and to access support to leave homelessness and rough sleeping behind them.

2024/25, we allocated over £950,000 to new S106 projects (of which almost £250,000 is in grants for improvements undertaken by community groups and sports clubs).

S106-funded improvements completed in the last year include: indoor skate park facilities (in Abbey); tennis courts (Christ's Piece and Nightingale Avenue recreation ground); outdoor fitness equipment (Coleridge recreation ground); basketball areas (Green End Road, St Matthew's Piece and Scotland Road recreation grounds); indoor and outdoor sports facilities (Netherhall Sports Centre); and better community facility equipment/storage at Campkin Road centre, Chesterton recreation ground Pavilion, The Junction, Ross Street centre and Trumpington Village Hall.

For more information:
cambridge.gov.uk/grants-and-funding
grants@cambridge.gov.uk
 01223 457875

Ukraine Permission Extension

The Ukraine Permission Extension visa scheme opened earlier this year. It provides eligible Ukrainians, such as people who travelled to the UK on 'Homes for Ukraine', with an 18-month visa to live and work in the UK.

- People can apply when they have 28 days or less on their current visa. If they apply too early, the application will be rejected. If they apply after their current visa expires, their right to remain in the UK will be lost.
- People must be in the UK when making an application, and cannot leave the UK until a decision is received. If they leave the UK before receiving a decision, the application will be withdrawn.
- People will need to prove their identity as part of their application, using either a passport or an expired biometric residency permit.

Application decisions will usually be received within eight weeks. Your rights to live and work in the UK continue whilst you are waiting for an application decision.

Apply at gov.uk by searching 'Ukraine'. Anyone with questions can contact the council at Ukraine@cambridge.gov.uk or Cambridge Ethnic Community Forum by calling 01223 655241



eVisas have replaced physical immigration documents

Most physical immigration documents expired on 31 December 2024 and were replaced by an online immigration status, known as an eVisa. This does not affect those who hold a British or Irish passport.

People applying for the Ukraine Permission Extension scheme will require an eVisa to prove their right to live and work in the UK. Anyone who has not yet applied for an eVisa, can do so now at gov.uk/evisa

If you need help applying for an eVisa you can contact the national organisation Migrant Help evisa@migranthehelpuk.org



U3AC

Inspiring, Educational, Sociable.

Retired or semi-retired?

Now it's your time to explore new ideas, skills and interests, meet new people and enjoy yourself!

From astronomy to history, Bridge to botany - there is something for everyone!

- Run by members for members
- Meet people with common interests
- Choose from over 300 educational, social and leisure day-time activities in and around Cambridge.

27-28 Bridge Street, Cambridge, CB2 1UJ **Join us today**
 Telephone: 01223 321587
 Registered Charity No: 1180769 **www.u3ac.org.uk**



Attingham Estates

PROPERTY MANAGEMENT

- **Tenant Finder**
- **Rent Collection**
- **Full Management**
- **Property Maintenance**

CONTACT US FOR A CONSULTATION

07745 271029 | 07883 355342
 hello@attinghamestates.com
 www.attinghamestates.com
 instagram.com/attinghamestates



"East Anglian Air Ambulance were at my side when I needed help; with a gift in my Will I'm going to make sure they're there for others."

Carl Atkins,
former patient.

Let your legacy take flight

With a gift in your Will you can save lives in the future.

Request your FREE Will guide at eaaa.org.uk/giftsinwills



Download your brochure now

Supporting biodiversity in spring and getting the city summer ready

Biodiversity is the variety of plant and animal life. It contributes to everything that is necessary for survival, including fresh water, clean air, food and medicine.

The higher the level of biodiversity the better. In May 2019, the council declared a biodiversity emergency allowing the council to put steps in place to reverse the decline in biodiversity in and around Cambridge. Some of these actions include:

Reducing the use of herbicides in the city

In March 2024, the council officially discontinued the use of herbicides across all council owned sites, including parks, car parks and housing areas.

Instead, mechanical sweepers and hand tools, such as hoes and weed ripper brushes will be used, which is better for the environment, and better for the health of residents and council officers than standard herbicides.

It is widely recognised that the use of herbicides damages the surrounding environment, posing a threat to animals, harming and killing invertebrates, which are important to soil health, water quality and the ecosystem generally.

Protecting the city's chalk streams

We are taking measures to



protect local chalk streams. These include regenerative farming practices and restoration projects.

We have formed the Greater Cambridge Chalk Stream Project to address these challenges. Other organisations involved include local parish councils, utility companies and government agencies.

The project's evidence-based plans will help restore and protect our chalk streams. As well as increasing biodiversity, this work will help to introduce sustainable water management practices and support communities to enhance and sustain their local environment.

Creating long grass areas

Road verges, parks and open spaces are being made more wildlife friendly by introducing long grass areas that replicate meadow-like environments to support those species that would typically thrive in those surroundings.

Meadow-like grasslands encourage more wildflowers to grow which will increase year-on-year. Wildflowers and grasses provide food for insects including bumblebees, hoverflies, beetles, butterflies, moths and grasshoppers. Long grass areas offer safe refuge for insects to lay their eggs and complete their life cycles.

Every small patch of grassland adds up to make a big area for wildlife in our city.

Becoming a butterfly friendly city

Insects including butterflies and moths form a huge part of the city's biodiversity.

The council supported a Butterfly Motion in November 2024 to work with Butterfly Conservation, a

wildlife charity, to make Cambridge butterfly (and moth) friendly. This will involve reviewing the current Biodiversity Strategy, working with local partners to maximise impact and creating butterfly friendly areas.

How to look after your garden and support biodiversity

- **Avoid using herbicides** – the use of herbicides damages the surrounding environment, not just the areas in which you place it. This is because the wind often contributes to spreading it outside of the applied areas.
- **Avoid cutting back hedges** – although this feels like the perfect time to cut back hedges, it isn't! March to July are the busiest times for nesting birds and cutting back your hedges could harm them. Before doing any work to your hedges during this time, you should check if there are any nesting birds and stick to only trimming parts of your hedge which are overhanging.
- **Use a watering can instead of a hose** – save water by using a watering can instead of a hose when gardening. This reduces the amount of water that you waste and will save you money on your water bill.



Find out more about biodiversity in Cambridge:
cambridge.gov.uk/biodiversity

Could your garden lights be harming moths?

There are around 2,500 species of moth in the UK.

They thrive in the night, when it is dark and work hard as pollinators. Sadly, moth numbers are declining.

Many moths are attracted to natural sources of light but artificial lights, like the ones commonly found in gardens or

at front doors and drives, can disorient them. This can lead to moths becoming trapped or exhausted. It also makes them more vulnerable to being preyed upon.

These simple steps can help you to make sure your garden is moth friendly:

- **Reduce** the amount of time

your garden lights stay on for and the intensity of the light using dimmers

- **Replace** cool-white or blue lights with warm-white or amber LED lights
- **Redirect** the light down using shielded light fixtures
- **Remove** any lights you don't need.



How does the council fund your services and where does the money come from?

Cambridge City Council is responsible for collecting Council Tax from Cambridge residents to help pay for the work of local councils and the emergency services.

Council Tax is a property-based tax which is payable on most domestic properties, and what you pay is divided between the county council, the police and crime commissioner, the combined authority, the fire authority and the city council.

There is one Council Tax bill per property, whether it is owned or rented, and the people who live there would normally be responsible for paying it.

The city council will spend approximately £113.4m in 2025/26 delivering services in Cambridge.

The city council's budget for 2025/26 puts the council on track to meet its target of saving £6 million a year by April 2026, to keep the council financially sustainable while investing in key priorities: building new council homes, supporting community initiatives, and tackling climate change.

While the council currently has healthy reserves or 'savings' of around £20 million, if no action was taken to balance the budget, these reserves would run out by 2029/2030 as they would have to be drawn on to cover an annual deficit, rather than investing in projects that bring long term benefits.

We have prioritised finding efficiencies in service delivery, and increased some charges, to protect essential frontline and safety net services for our most vulnerable residents.

In addition, some core areas of work will continue to be prioritised in line with public support. This includes running community centres; continued funding of re-deployable CCTV cameras and a one-off investment of £120,000 to upgrade our CCTV control rooms; delivering equalities and cohesion work – such as providing funding to help support the Pink Festival Group charity to run their annual Cambridge Pride event; supporting residents to stay healthy and well with subsidies for activities for those who need it most; and supporting and delivering the ongoing arts and cultural development programme – including improvements at the Corn Exchange, running the annual free fireworks event, and a one-off programme of free folk events in 2025.

We receive income from fees and charges for services, commercial property rents and Housing Benefit subsidy. Income also comes from your Council Tax payments, grants from the government and a share of local business rates. We are landlord to more than 7,500 council homes, and the rents from these are kept separately to pay for housing services.

So far in 2024-25 your Council Tax has helped to pay for a wide range of services for Cambridge residents, including:

Collecting local taxes and administering housing benefit and support for Council Tax – We collected £102.5m in Council Tax from 60,831 households and £128.8m in business rates from 4287 businesses. We paid around £27m in housing benefit and awarded nearly £9.6m in Council Tax support and made £149,000 of Discretionary Housing Payments

Keeping streets and open spaces clean and tidy – We routinely maintained over one million square metres of grass and collected waste from bins in parks and open spaces. We cleared 296 reports of offensive graffiti and 688 reports of detrimental graffiti and removed 1528 incidents of flytipping. We also responded to 294 reports of abandoned vehicles

Helping residents to be healthy and active – Over 8,000 participations in Active Lifestyle activities. We were able to offer over 1600 hours of free and low-cost activities to support physical activity and healthy lifestyles. We also offered 129 participation grants to help young people and families access sport and activity

Providing community centres, community development activities and a community grants programme – During 2024, over 185,000 visits were made to our community. Our community grants programme allocated over £1.14m to voluntary and community groups for projects to reduce social and economic disadvantage for residents with the greatest need

Providing leisure facilities, including indoor and outdoor swimming pools – During the year there were around 500,000 swims in our swimming pools and nearly 178,000 visits to our sports facilities. Over 58,000 of the visits were made by people with concessionary memberships

Dealing with antisocial behaviour and calls about noise nuisance – During 2024 our Antisocial Behaviour team dealt with 839 reports of anti-social behaviour and delivered interventions that reduced risk in 84% of cases. Since April last year, our Environmental Health Service responded to just over 730 complaints about noise nuisance

Managing and maintaining over 7,500 council homes – In 2025/26 an estimated £47m will be used to manage and maintain council homes. A further estimated £83m will be used to build new homes and to make improvements to existing homes, such as improving their energy efficiency

Providing housing advice and support – During 2024 the council and its partners prevented or relieved homelessness for over 370 households and secured housing in the private rented sector for nearly 160 households in housing need. The council also supported rough sleepers – 26 were identified in Cambridge during the annual count

Planning for new developments and growth in the city and determining planning applications – In the year our shared planning service continued to take forward our Local Plan, dealt with over 2,500 applications (including preapplication advice) in the city, determined 89% of major

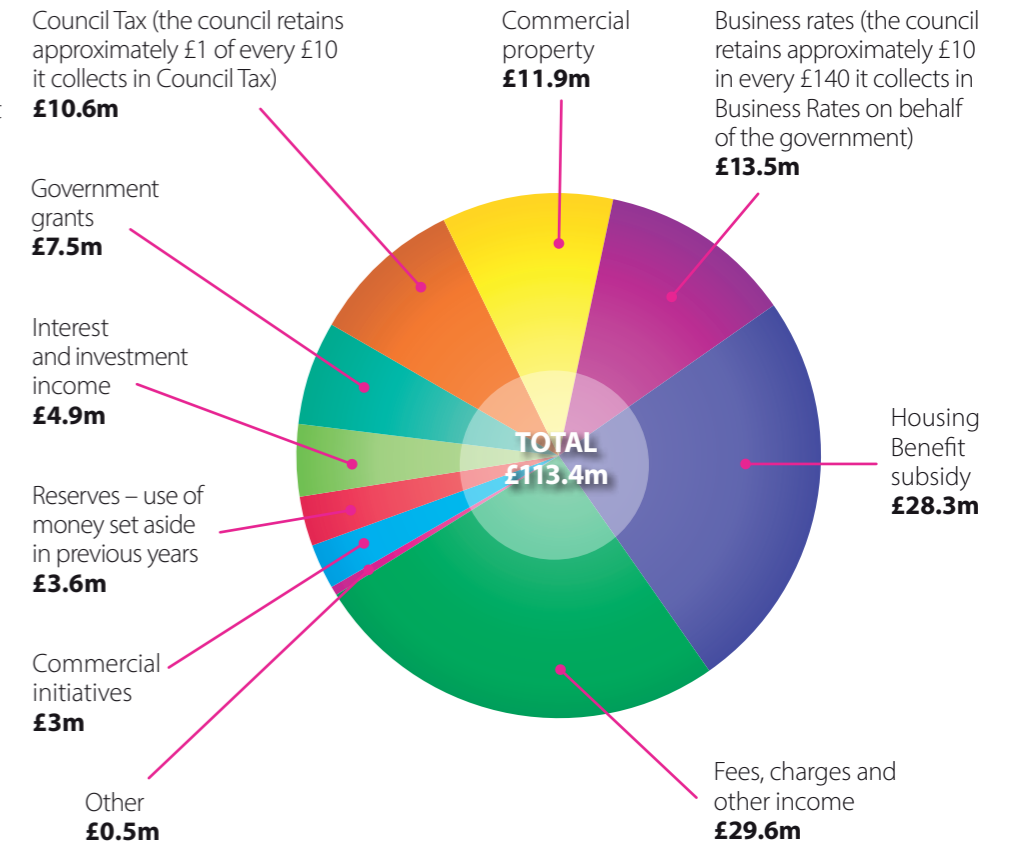
applications and 95% of non-major applications within the original or agreed extension deadlines

Managing our car parks and promoting greener travel – Our multi-storey car parks accommodated 1.95m vehicles throughout the year as visitors travelled to the city. We maintained our complimentary Shopmobility service, providing the hire of mobility aids including scooters and wheelchairs to support city centre accessibility. Additionally, we remained committed to sustainable transportation by promoting greener travel options, advocating for car clubs, and expanding our electric vehicle (EV) charging infrastructure. We introduced the country's first accessible EV charging facility at Park Street car park accredited with the PAS1899 Disability Access award

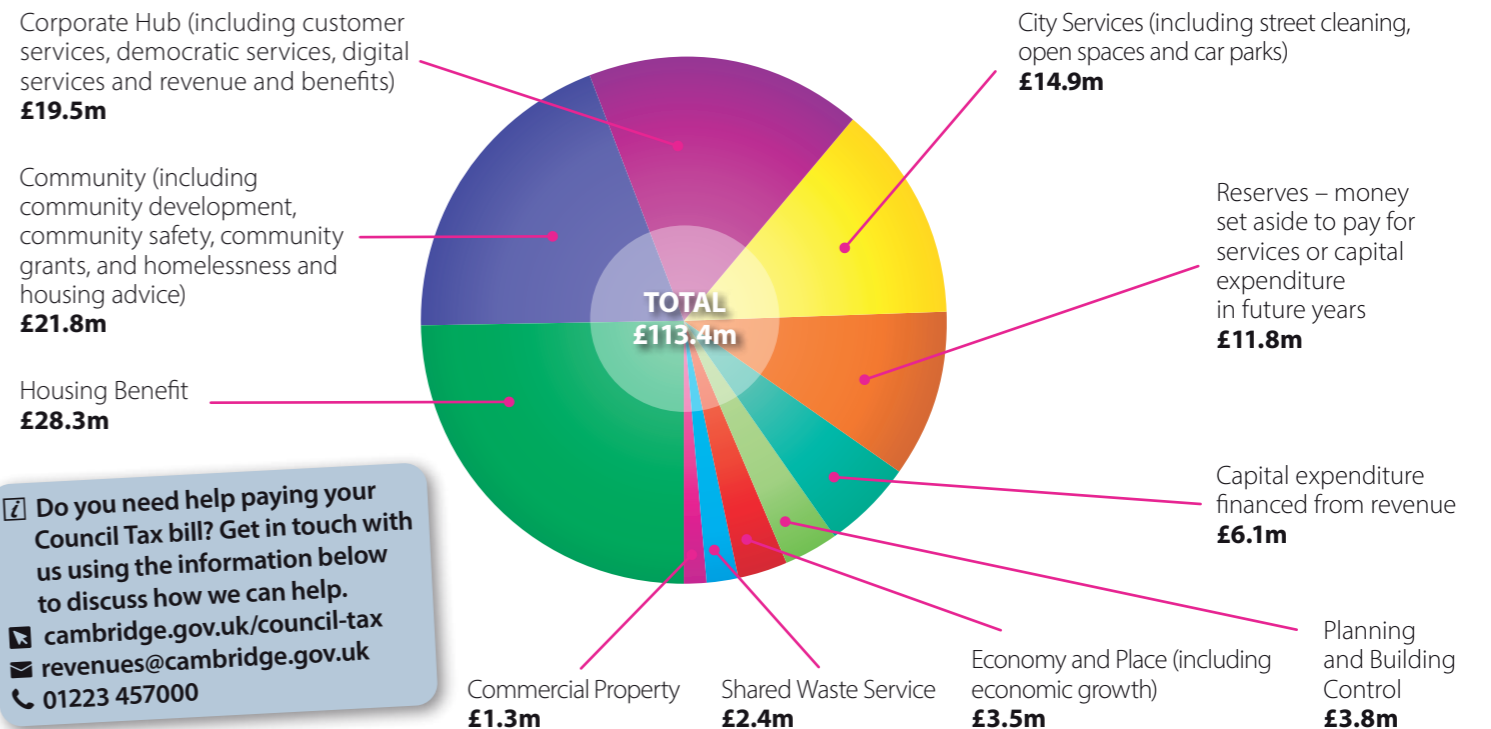
Emptying your bins and improving recycling – Our shared waste service has collected waste from over 52,000 bins in the city, missing just under 0.1% of bin collections in the year from April 2024 to January 2025. We have also diverted just over 50% of household waste from landfill

Responding to your enquiries – In 2024, our customer services centre received over 225,000 contacts, including telephone calls, emails and in person visits from customers to our reception. Almost 92% of customers telephoning in had their query dealt with first time and nearly 150,000 service requests were also made online by Cambridge residents.

Where the council's money comes from



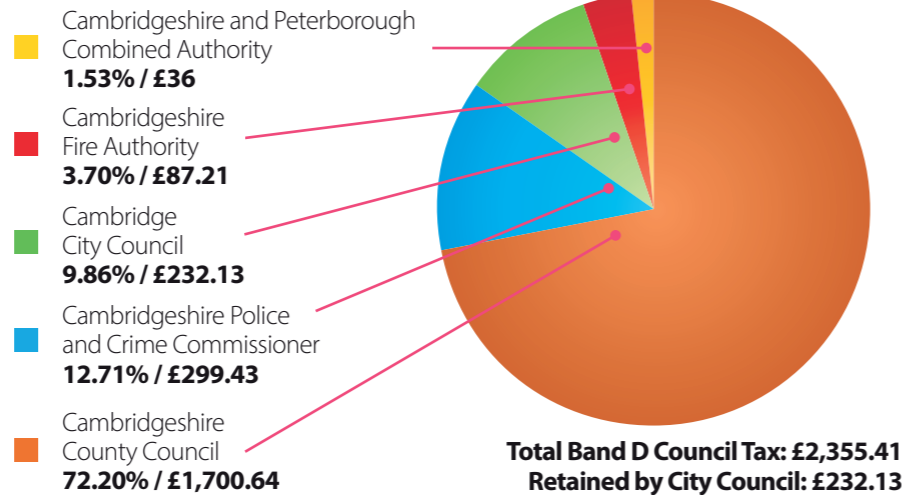
Where the council's money will be spent



Do you need help paying your Council Tax bill? Get in touch with us using the information below to discuss how we can help.
cambridge.gov.uk/council-tax
revenues@cambridge.gov.uk
 01223 457000

Council Tax

Council Tax is payable on most domestic properties. These are usually houses or flats but can also be other types of property such as houseboats or caravans. The percentages of the Council Tax Cambridge residents pay is divided up as follows:



Folk Festival to return in 2026

As you may have seen elsewhere, the city council has taken the difficult decision that the Cambridge Folk Festival will take a fallow year this year. Having a year off will give us an opportunity to assess how the folk festival can be even more successful in the future, in the context of a challenging economic environment for many live music festivals.



Festival-goers, organisers and people in the music industry will all have an opportunity to share their ideas about the festival in the coming months. In the meantime, look out for a series of folk-inspired community events taking place around the city across the summer. For more information visit cambridgefolkfestival.co.uk

New country park set for urban lakes

A new 'urban country park' at Cherry Hinton Lakes off Coldham's Lane has been given planning permission.

The new public park will be created on the site of former quarries, as part of a larger redevelopment of the area including office and lab spaces, a community pavilion, café, fitness and play facilities, and improved walking and cycling links.

The local community is being invited to get involved in drawing up plans for managing the area.



Get out and get active this springtime!

With the days getting longer and the weather picking up in the springtime, you might feel it's the right time of year to get some more activity into your life. Here are a few ideas for how people of all ages, experience and ability can get out and get more active with the support of the council's Active Lifestyles team.

Feel Invigorated with low-cost exercise sessions

Our Invigorate programme of physical activities provides low-cost sessions which anybody in Cambridge can easily access.

The programme currently includes weekly social pickleball and badminton sessions, outdoor gym fitness tasters in parks, strength and fitness for over-50s plus pilates, yoga, chair yoga and t'ai chi classes available both in-person at community centres and online.

With prices from as little as £3 per session, these classes are a great opportunity to try something new, without the commitment of paying a joining fee, and are available at various locations throughout the city.

You can check out our full schedule of weekly activities and make a booking online at bookwhen.com/camsport or phone 01223 457000 for more information.



Free activities for children this Easter

Sports students from Anglia Ruskin University are running two Easter holiday sports camps on behalf of the council, aimed at any children aged 8-12.

The free events offer a full day of team games and exciting sports activities for youngsters at the following venues:

Orchard Park Sports Ground, Ring Fort Rd CB4 2GW - Tuesday 15 April (10am-4pm)

Netherhall School Sports Centre, Queen Edith's Way CB1 8NN - Wednesday 16 April (10am-4pm)

Every year these camps prove to be incredibly popular, so make sure you book in advance to secure a place. For all you need to know about the sessions, and to make a booking, visit: bookwhen.com/camsport or email sport@cambridge.gov.uk



Keep active in your own home

When life just makes it difficult to get out of the house to attend regular exercise sessions, let us bring the activity to you!

In addition to our live programme of online activities, the Active Lifestyles team has a vast library of activity courses, available to access at anytime and at completely free of charge. Courses include

- Pilates for beginners
- Strength Training at Home
- Return to Fitness
- Back to Yoga & Movement
- A Recipe Card series.

For more information and to join in, visit getmovingcam.thinkific.com/



Living better with long-term conditions

Our new exercise referral service can make it easier for you to get the support and advice that you need to be more active, if you have a long-term health condition.

Anyone in Cambridge with a long-term medical condition can make use of our new, online assessment form to discover what services the council provides to support you in becoming more active.

Among the services on offer are prescriptive gym programming, online specialist courses, and group-based exercise referral community classes, catering for all levels of ability.

To find out what might be available to you, or for more information, visit cambridge.gov.uk/startup, email startup@cambridge.gov.uk or phone 01223 458613.



Cambridge University Amateur Dramatic Club

EVERYBODY'S TALKING ABOUT JAMIE

Book & Lyrics by TOM MACRAE, Music by DAN GILLESPIE SELLS, From an idea by JONATHAN BUTTERELL

The spectacular story of self-expression in the face of stigma; of joy in the face of hate; of a little bit of glitter in the grey.

WED 19 - SAT 29 MARCH AT 7.45PM
MATINEES AT 2.30PM

BAWDS

THE WATSONS

By Laura Wade

Based on an incomplete novel by Jane Austen, this sparkling comedy asks 'what happens to characters abandoned by their author?'

TUE 08 - SAT 12 APRIL AT 7.45PM
SAT 12 APRIL AT 2.30PM

Combined Actors of Cambridge

THE GLASS MENAGERIE

By Tennessee Williams

A poetic portrayal of a family on the brink of change. This intimate and engaging memory play explores the complex web of love and loyalty that binds families together and may, eventually, drive them apart.

TUE 15 - SAT 19 APRIL AT 7.45PM
SAT 19 APRIL AT 2.30PM

CUADC

DOCTOR FAUSTUS

By Christopher Marlowe

Bored academic Doctor Faustus is ensnared in a world of demons and dark magic. As his dependence on the infernal grows, so too does his terror of judgement.

TUE 06 - SAT 10 MAY AT 7.45PM
SAT 10 MAY AT 2.30PM



Sweet Charity, February 2025 (Photo by Paul Ashley)

www.adctheatre.com | 01223 300085

Regular exercise has a positive effect on children's mental health. **Fact!***

GK Fit provides fun and inclusive sport sessions that can boost your child's mood, help to ease depression and reduce anxiety. Not to mention the physical benefits!



We offer a variety of daytime sports for children who are out of school or home educated, plus after school netball for everyone. Visit our website for more info at:
www.gkfit.co.uk

Get Physically Fit
Get Mentally Fit
Get GK Fit



*www.sportengland.org/news-and-inspiration/new-findings-show-impact-exercise-childrens-mental-health-conditions

Cambridge International School & OAKS Nursery

Independent nursery and day school for 2-11 year olds

- Supportive and nurturing community
- Holistic curriculum approach
- Small class sizes
- Flexible learning opportunities
- Mother tongue programme
- Supporting learners new to English
- Forest school programme
- Idyllic park setting

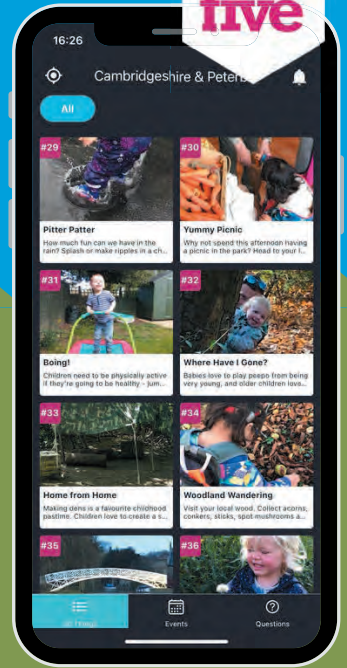


+44 (0) 1223 416938 | admissions@cischool.co.uk
Cherry Hinton Road | Cambridge | CB1 8DW

Free fun for Cambridgeshire families

With this list of 50 playful activities to enjoy, inspiration is always at hand.

Scan here to learn more about the app.



50 things to do before you're five

Low or no cost

Low or no cost activities to do at home or when out and about, for families with children under five years old.

Support their development

Your day to day interactions can support early language, motor skills and, building resilience.

Find local events

Find free or low cost events near you on our app's events page.

Play anytime

Use the free app and website at your own pace, enjoying the activities time and time again.



cambspboro.50thingstodo.org
search '50 Things to Do' on Apple or Android

■ advertisements

Paying too much for your glasses?

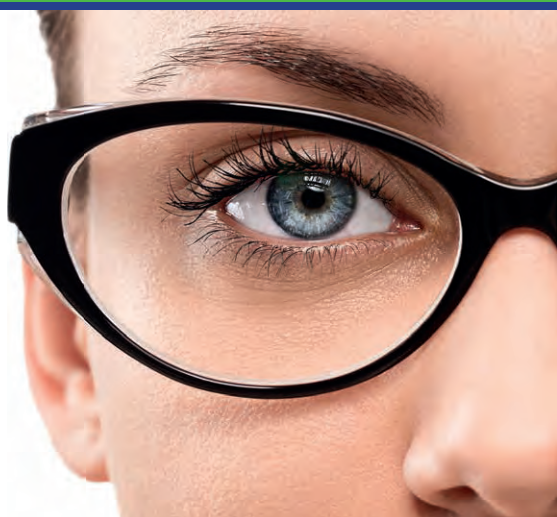
Save Money - Buy Direct!

Visit our factory shop to see our fabulous range of Discount Prescription Eyewear

- Hundreds of frames to choose from, including designer frames from Ray-Ban, Polo Ralph Lauren, Oakley, PRADA, Ted Baker and Versace
- Specialists in high and complex prescriptions
- Same-day or next-day service available*
- Save up to 75%
- Huge range of designer sunglasses
- Full range of sports eyewear

Official stockists

*subject to prescription and availability



We are open 9am to 5pm Monday to Friday, and 9am to 1pm Saturday



Call us **01954 231545** Visit our website **www.all-eyes.co.uk**
20 Norman Way Industrial Park, Over, Cambridge CB24 5QE

Your blue bin and beyond – a journey to better recycling

What happens to the materials you carefully clean, squash or flatten at home after the council empties your blue bin?

Their first destination is a Materials Recycling Facility (MRF) where the different material types like metal cans, glass, paper and plastics are sorted and separated, mainly by machinery such as magnets and infra-red sensors.

Once separated, materials are pressed into bales ready to be traded. UK buyers are prioritised – last year all materials collected from blue bins in the Cambridge area, except for 38% of paper and card, were sold on to recyclers all over the UK.

Some materials like paper are transformed into new products at their first destination, being pulped and pressed into large reels of paper for newsprint, for example. Others like metal are melted down into ingots which are then sold again to manufacturers who make anything from aeroplanes to new cans.

For the last 10 years your recycling has been dropped off at a MRF in Waterbeach, just outside Cambridge, but this contract has now expired. So from March there will be a change in the journey that your recycling takes. The new contract will mean more recycling can be processed to a higher standard than before, while residents will not notice any change to their bin collections.

Following a competitive tender process, the new contract has been awarded to Re-Gen which has a MRF in Newry, Northern Ireland. This is one of Europe's most advanced MRFs, running on 100% renewable energy and featuring specialist machinery designed by Re-Gen's engineers. Initially, this is where blue bin recycling will be taken for sorting. However, Re-Gen say that, within the first half of this year, it will take over a MRF on the UK mainland so recycling from Cambridge will not need to be transported to Northern Ireland.

The Re-Gen MRF will be able to correctly sort and recycle 19% more of the material from our blue bins than under the previous contract. This includes very small fragments which

SIX STEPS TO RECYCLING

Packaging like plastic bottles or food cans could have been manufactured almost anywhere in the world before ending up in your blue bin... but what happens next?

- 1 **The bin lorry collects your recycling at the kerbside** 
- 2 **Recycling is taken to bulking/transfer station to be offloaded** 
- 3 **It's transported to a Materials Recycling Facility (MRF) to separate the materials** 
- 4 **Reprocessing plants further sort and grade materials** 
- 5 **Materials are manufactured into brand new products** 
- 6 **Products are distributed around the UK and the world to start the cycle again** 

could not be sorted in the past and ended up as waste.

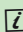

More effective sorting also means better recycling options – for example it will be possible for 95% of glass to be re-melted and used for new bottles and jars, rather than most being used in road construction as previously. Importantly, there will be no changes to our service and the items that are accepted in the blue bins.

Recycling will be travelling further than before between your bin and the MRF and this is something that we will be working with Re-Gen to minimise the impact of.

Re-Gen has an extensive haulage operation transporting both unsorted recycling from 16 councils in England to their MRF as well as sorted materials from the MRF to recycling companies around the UK. They will be able to make use of space in lorries returning to Newry to transport much of our material. Like our own waste service,

Re-Gen has begun transitioning its fleet of vehicles to more sustainable fuels like Hydrotreated Vegetable Oil, and is trialling electric lorries. Re-Gen's plans for a mainland UK MRF will reduce transport distance significantly.

The new contract with Re-Gen is set to improve outcomes for the recycling we collect. While the carbon impact of transport is something it is important to minimise, the total carbon footprint of recycling needs to be considered in the round. Being able to recycle 19% more of the materials we collect is a big leap in efficiency, and the higher quality of sorted materials means they have the best chance to be recycled over and over again, rather than 'downcycled' into products that are a dead-end for recycling.

 **For more information:**
 cambridge.gov.uk/bins
 wasteandstreets@cambridge.gov.uk

New Park Street car and cycle park now open

The new underground car and cycle park at Park Street opened at the end of last year.



If you're heading into the city centre, it contains parking for 239 bikes, 10 oversized bikes and 20 motorcycles. The redeveloped site has spaces for 223 cars, including 23 active charging spaces for electric vehicles with the remaining spaces ready to be rapidly converted to electric vehicle charging as demand increases.

It also has two accessible EV charging spaces for disabled customers among its 16 blue badge parking spaces. The car park recently became one of the first in the UK to be



accredited by the British Parking Association for facilities meeting the highest national

standards for disabled motorists and other people with accessibility needs.

New homes bring joy to Joy's Corner

The first residents recently moved into their new purpose-built modular homes at Joy's Corner on Baldock Way in Queen Edith's.

The energy efficient, low-carbon homes are a stepping stone for people who have previously had experience of rough sleeping and are making the transition into a safe and comfortable space with a fixed address and a more stable lifestyle.

A number of local organisations have worked together on the project, and the new tenants will be given all the support they need to integrate into the local community.



Refugee Week 2025

Refugee Week 2025 is being held from 16 to 22 June. The theme for this year is 'Community as a Superpower' representing the power that community has in bringing people together. To keep up to date with what is happening in Cambridge to mark Refugee Week, and other useful information, visit cambridge.gov.uk/refugee-support



Discounted reusable period products initiative launched

Residents of Cambridgeshire can now order a Mooncup – an eco-friendly reusable period product – for just £5 instead of the usual price of £23.50.

The initiative partnering with Mooncup is funded by the Cambridgeshire and Peterborough waste partnership (RECAP), made up of all Cambridgeshire councils.

Disposable menstrual products contribute significantly to landfill waste, with the UK producing 200,000 tonnes annually. By subsidising reusable

menstrual cups, RECAP aims to tackle this environmental challenge by enabling more residents to adopt sustainable habits.

With this initiative RECAP aims to support around 1,300 residents to switch to reusable period products. This will prevent the disposal of about 264 single-use menstrual items annually per person, or about 343,200 items in total per year.



[Order your Mooncup online at cambridge.gov.uk/zero-waste-nappies-wipes-and-periods](http://cambridge.gov.uk/zero-waste-nappies-wipes-and-periods)



How Are You Cambridge?

www.HAYCambridge.co.uk

A website that brings together:

- Local things to do with information about what to expect when you get there.
- Opportunities to connect, be active, learn, get creative, explore the outdoors, volunteer and more!
- Places to get a wide range of support.

 @HowAreYouCambridge

Looking for something to do?

From yoga to singing, sports clubs to art groups, there is something for all ages and interests on the How Are You Cambridgeshire & Peterborough websites.

H.A.Y. is all about helping you look after you. We know that often the hardest part is getting started, so we include videos and information to help you know what to expect the first time you go.

 @HowAreYouCamsPboro

Support looks different for all of us. Whatever challenges you may be facing, the H.A.Y. websites have information from a wide range of organisations that may be able to help you - from the NHS and council services to local community groups.

Needing support?

If you are in a mental health crisis, call 111 and select the mental health option.

Point the camera on your phone here for support and activity ideas



#HelpingYouLookAfterYou



Dementia Social Group at Arbury Court Library

Last Monday of the month, 10am to 11.30am

A free monthly social event for people living with dementia and their carers. Free drop-in, just come along. An opportunity to meet other families and have a chat about how to support each other in a friendly and supportive environment. Refreshments and activities will be provided.



Library at home

Do you love reading but find it difficult to visit the library due to health reasons or caring responsibilities?



Our free Library at Home service is here to help! Friendly volunteers can bring books and other library resources straight to your door – and even stay for a chat. We're also looking for volunteers who can spare just two hours a

month to brighten someone's day and help them keep enjoying reading.

Get in touch to find out more! Email volunteers@cambridgeshire.gov.uk

Contact us:

Web: cambridgeshire.gov.uk/library

Tel: 0345 045 5225

Free to join, free to use!



Scan the QR code or drop in to your nearest library and speak to a friendly member of staff to register.

JPT DESIGN

*Need to create more space in your home?
Let us come and tell you what's possible!*

Free initial onsite consultation

**Architectural drawings for residential
planning & building control applications**



- extensions • conservatories
- loft/garage conversions • new build projects

The Studio, 23 Halifax Road, Upper Cambourne CB23 6AX

T: 01954 717442

E: info@jptdesign.co.uk • W: www.jptdesign.co.uk

WESTRIDGE Property Consultants

**Architecture
Planning & Building Regulations
Project Management**

We are a Chartered Building Consultancy providing professional services and construction advice on Extensions, Alterations, Refurbishment and New Build projects.

Tel: 01223 233 600
www.westridgeconsultants.co.uk

ghr

green hat renewables
Tel. 01638 781007
Mob. 07966 450353



- Installers of Renewable Energy for your home.
- MCS registered installer of Air Source Heat Pumps, Solar PV and Batteries.
- £7500 grants available towards the cost of an ASHP through MCS.
- We also install Mechanical Heat Recovery Ventilation (MVHR) and EV chargers.

E: enquiries@greenhatco.co.uk E: www.greenhatco.co.uk

Bush & Co.

Multi award winning, leading
Cambridge estate agents

What moves you,
moves us.

Book a **free** market appraisal

Scan the QR code below

Sales: 01223 242 262

Lettings: 01223 508 085

www.bushandco.co.uk



PEST PROBLEM?



Call **DRE Pest Control**

01954 230 708
07789 502 556



Commercial & Residential
One-off call outs
Management Contracts
Pest Prevention



Cambridge, Ely, Newmarket, Royston
drepestcontrol.co.uk

WheelieFreshBins

A wheelie bin cleaning service for both domestic and commercial customers.

Book a regular or one off clean.

Tel: 01223 277747

Book online at
www.wheeliefreshbins.com

Find us on 



ALL TYPES OF TREE SURGERY SOFT & HARD LANDSCAPING TREE REPORTS & SURVEYS • STUMP GRINDING

All of our staff are qualified to national standards and we hold a number of quality and safety accreditations to give you peace of mind that you are working with a contractor you can trust.



TREE WORK



STUMP GRINDING



LANDSCAPING



For your free assessment and quotation please contact us today on:

01638 750186 | INFO@SPLANDSCAPES.CO.UK | WWW.SPLANDSCAPES.CO.UK

Tackling climate change: our journey so far

Tackling climate change is a key council priority. We have been tackling climate change since the launch of the Cambridge Climate Change Charter in 2007 and our first Climate Change Strategy in 2008. Below are just some of the things we've done so far to reduce our carbon emissions and to help residents and organisations to reduce theirs. Read more: [cambridge.gov.uk/sustainability](https://www.cambridge.gov.uk/sustainability)

2007

- Council launched original **Cambridge Climate Change Charter**

2008

- Council approved its first **Climate Change Strategy**
- **Climate Change Fund** launched, to finance carbon reduction projects within the council

2009

- Trial of first two **electric council vehicles**
- Cambridge Carbon Footprint ran its first **Open Eco Homes event**

2010

- **Electric car charging points** installed in two city centre car parks

2011

- **£94,000 LED lighting** installed at Grand Arcade Annex car park
- **Solar thermal panels** installed to heat water at Abbey swimming pool
- **Energy efficiency measures installed** in council homes through the Decent Homes programme

2012

- **Energy efficiency improvements** implemented at Abbey, Parkside, Jesus Green and King's Hedges swimming pools
- Supported **insulation measures in over 500 homes city wide** through The Cambridge Home Insulation grant
- **Waste service increased** the range of materials that households can recycle, adding plastic pots, tubs and trays

2016

- Began purchasing electricity from **100% renewable sources** for council buildings
- Seven council diesel vehicles replaced with **electric vans**
- **£320,000 LED lighting** installed at Grand Arcade car park and Grafton East car park, reducing electricity usage by 50%
- Action on Energy partnership retrofitted over 400 homes in Cambridge with **insulation measures** through the Green Deal for Communities funding
- **Bronze Sustainable Food City status achieved** by Cambridge Sustainable Food Partnership

2015

- **Solar panels** installed at Buchan Street Neighbourhood Centre
- 20 council vehicles replaced with **alternative stop-start technology**
- **LED lighting** installed at the Crematorium

2014

- **Heat pumps** installed at King's Hedges swimming pool
- **Solar panels** installed at Cherry Hinton Village Leisure Centre
- **Greening Your Home Guide** published
- New cycle racks installed in the city centre in partnership with Cambridgeshire County Council creating **600 more bike parking spaces**

2013

- **LED lighting and controls** installed at Grafton West car park
- £500,000 programme delivered in partnership with Cambridgeshire County Council, **improving highways for cyclists**

2017

- **Solar thermal system** upgraded at Abbey swimming pool
- **City Leaders Climate Change Group established** to bring together business, universities and the public sector to explore how emissions in the city can be reduced
- Sustainable City Grant helped to fund the **World's Biggest Repair Café** organised by Cambridge Carbon Footprint

2018

- Local Plan adopted including requirement for new developments to achieve a **19% reduction in carbon emissions**
- Council adopted a new **Sustainable Food Policy**
- Became the first council to require all new licensed taxis to be **low emission vehicles**
- Supported over 200 low-income residents to install **energy or water saving measures** in their homes

2019

- **Council declared a Climate Emergency and a Biodiversity Emergency**
- £285,000 project to **install solar panels** across eight council sites, including the Guildhall, Mandela House and Abbey and Parkside pools
- £350,000 project to **install measures to reduce carbon emissions** at the Guildhall
- Cambridge Canopy Project launched to **increase the tree canopy** in Cambridge
- **Planted 500 trees**

2022

- £1.7 million major **carbon reduction scheme** completed at Parkside and Abbey swimming pools, including air-source heat pumps
- Greater Cambridge Shared Waste Service's **second electric refuse collection vehicle** in operation
- 18 charging points installed for electric taxis and 38 **on-street residential charging points** piloted for electric vehicles
- **Cambridge Retrofit Guide** published
- **Cambridge Climate Map** created by Cambridge Carbon Footprint
- Cambridge Carbon Footprint launches **climate change training course for residents**, funded by the Council
- Adopted a **plant-based food** motion, to transition to 100% plant-based food at civic events by 2026
- Supported Cambridge schools working to meet the accredited **Eco-School Green Flag Award**.

2021

- Separate **food waste collection** trial conducted
- **Sustainable Food Places Silver Award** received by Cambridge Sustainable Food Partnership
- Preferred Options report of new Local Plan published, including vision for development that **minimises carbon emissions**
- External **insulation and solar panels** installed in private homes and 150 council homes
- **Green Business Grants** launched, awarding £150,000 grants to help Cambridge organisations reduce carbon emissions

2020

- Committed to replacing existing council vehicles with **Ultra Low Emission Vehicles** when they are due for replacement
- Cambridgeshire's first **electric refuse collection vehicle** commissioned by Greater Cambridge Shared Waste Service
- **New Climate Change Charter** developed and launched with Cambridge Carbon Footprint

2023

- Partnered with local authorities to launch the Green Business Programme, **helping businesses reduce their carbon footprint** by developing net zero roadmaps and offering grants of up to £5k.
- Funding awarded from the Heat Network Delivery Unit to progress a **District Heating Scheme** to the next phase.
- Greater Cambridge Shared Waste Service's **third electric refuse collection vehicle** in operation
- Funding secured for the development of a £6.1m **Waterbeach Renewable Energy Network** solar project, led by Greater Cambridge Shared Waste Service
- Switched to **reusable cups** at Corn Exchange and Guildhall events
- First 15 **electric charging points installed**, at Adam and Eve car park, in partnership with Connected Kerb
- DiversiTREE project launches taking a **community-based approach to managing veteran trees along the riverbank**
- **Conservation grazing reintroduced** at East Barnwell Nature Reserve to improve biodiversity

2024

- Continuing to **retrofit council housing stock** while working collaboratively as part of Action on Energy Cambridgeshire, to retrofit privately owned properties
- Continued building new homes to **Passivhaus standards**
- **Sustainable Food Places Gold Award** received by Cambridge Sustainable Food Partnership, recognising Cambridge as leading the way in transforming local food systems
- **Fourth electric refuse collection vehicle** commissioned by Greater Cambridge Shared Waste Service
- **Cambridge Folk Festival achieves the Greener Festival 'Outstanding' Certification** again, recognising the significant reductions in greenhouse gas emissions, transport links and food and waste management
- **New Air Quality Strategy** adopted to improve air quality in Greater Cambridge
- New **herbicide free** approach
- £150,000 secured to support **Biodiversity Net Gain** in planning applications

Key

- **Reducing Cambridge City Council's carbon emissions**
- **Helping Cambridge reduce carbon emissions**

What's next?

We continue to explore new projects to work towards our target to reduce the council's carbon emissions to net zero by 2030, and the council's vision for the city's emissions to be net zero by 2030. These projects include:

- **City Centre District Heat Network**, in partnership with the University of Cambridge, city centre colleges and Anglia Ruskin University. Planning to supply renewable energy to heat city centre buildings.
- Developing a **Renewable Energy Network in Waterbeach**, in partnership with South Cambridgeshire District Council, consisting of solar panels, energy storage and electric vehicle chargers* to charge Greater Cambridge Shared Waste Service's refuse collection vehicles as they are replaced with electric vehicles.
- **Scaling retrofit to council homes** in Cambridge and private homes across Cambridgeshire.
- Continuing to install a network of approximately 600 **electric vehicle chargers across the council's car parks**.
- Continue to work with partners on the **River Cam CAN project**, supporting communities near the river to work on initiatives that will benefit them and the environment.



* Subject to funding

BRINGING CLARITY TO DIVISION



Barr Ellison Law

FAMILY & DIVORCE SERVICES

FIXED FEE CONSULTATION

01223 417200 | law@barrellison.co.uk

BE LAW
BARR ELLISON