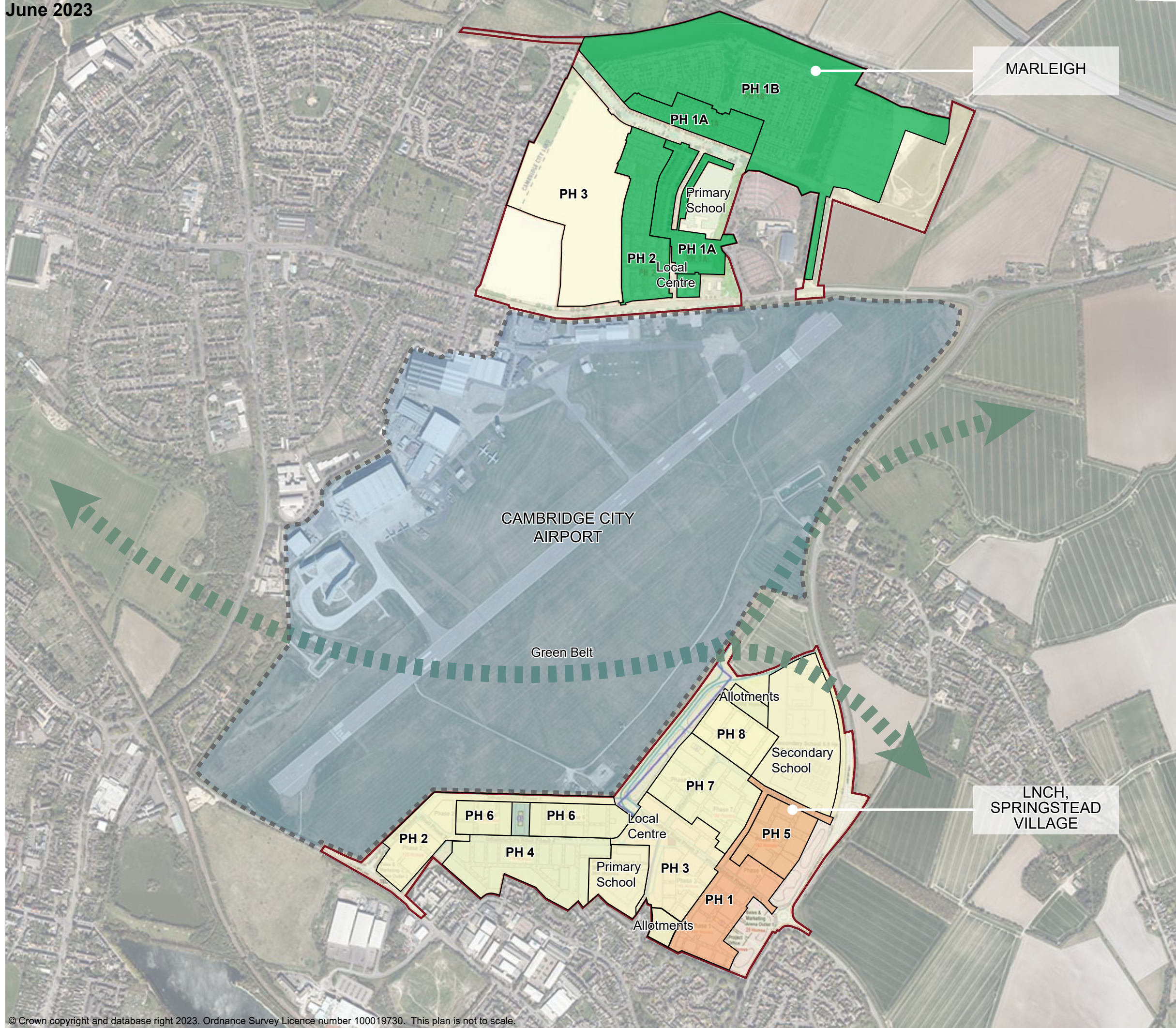


# East Quadrant

June 2023



**Marleigh**  
(Application Ref: S/2682/13/OL)

- Up to 1300 homes
- Primary School
- Local Centre
- Community Facilities inc. Sports Grounds, Allotments, and public open spaces
- Associated infrastructure including vehicular, pedestrian and cycleway access

**Land North of Cherry Hinton (now known as Springstead Village)**  
(Application Ref: 18/0481/OUT, S/1231/18/OL, as varied by 22/01966/S73 & 22/01967/S73)

- Up to 1200 dwellings
- Primary and Secondary Schools
- Local Centre
- Community Facilities inc. Community centre, Allotments, and public open spaces
- Associated infrastructure including vehicular, pedestrian and cycleway access

Marleigh			
Application Reference	PH	Proposal (summary)	Local
S/1096/19/RM	1A	239 Dwellings, non-residential floor space including 'Market Square', café, nursery and offices	SCDC
20/02569/REM	1B	308 Dwellings, playing fields, allotments, sports pavilion, and allotment clubhouse	SCDC /City
21/02450/REM	2	421 Dwellings	SCDC /City

Land North of Cherry Hinton (now known as Springstead Village)			
Application Reference	PH	Proposal (summary)	Local
22/05037/REM	1, 5	351 Dwellings	SCDC /City

**KEY**

- Sites/blocks with outline approval
- Sites at Reserved Matters/Full Application Stage
- Sites with Reserved Matters/Full applications approved
- Sites under construction
- Completed sites/blocks